

## MASTER PLAN SUMMARY

### Overnight Facilities

#### RV/Camp Sites

Existing RV/Camp Sites:	76
Existing to remain:	54
Proposed:	15
Total:	69

#### Cabins

New Cabins	60
Cabin Size:	16' x 40'
Min. space between cabins:	35'
Existing Cabins:	5

### Hotel/Conference Center

Total Rooms:	156
Total Parking Spaces:	236
Cars/Room:	1.51
Conference Center:	5,000 sf
Swimming Pool	

### Day Use Facilities

Adventure Course  
The Great Lawn  
(Phase 1 septic & overflow parking)  
Middle and Lower Terraces  
Cricket Theater  
The Barn Event Facility  
Lakeside Wedding Venue  
Coveside Wedding Venue  
Valley Wedding Venue  
Cabin Wedding Venue  
Woodlands Wedding Venue  
Event Lawn

### Overnight Amenities

#### Comfort Stations:

Beaches  
Camper's Park  
Tot Lots  
Courtsey Docks  
Upgraded Boat Ramp and Parking

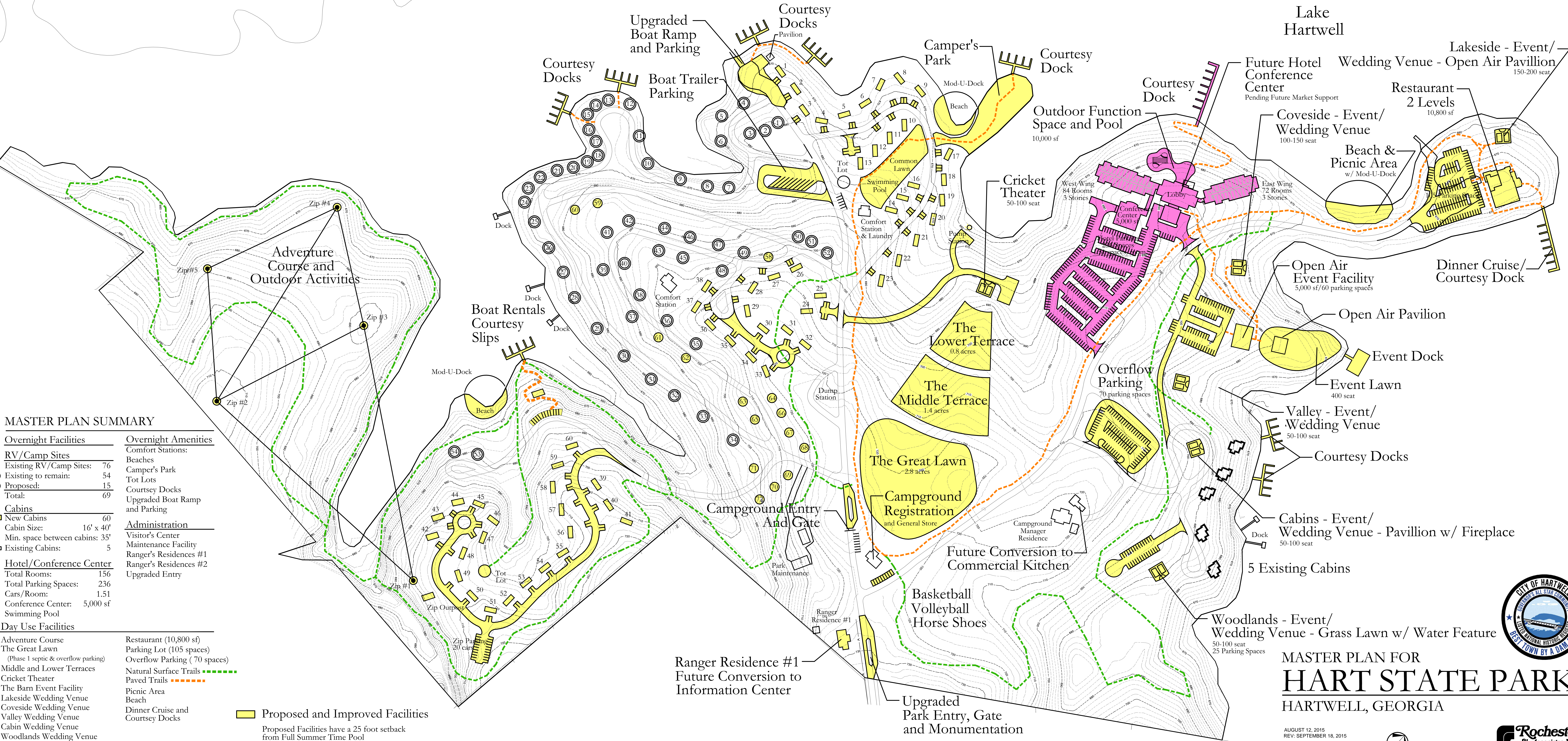
### Administration

Visitor's Center  
Maintenance Facility  
Ranger's Residences #1  
Ranger's Residences #2  
Upgraded Entry

Restaurant (10,800 sf)  
Parking Lot (105 spaces)  
Overflow Parking (70 spaces)  
Natural Surface Trails  
Paved Trails  
Picnic Area  
Beach  
Dinner Cruise and  
Courtsey Docks

### Proposed and Improved Facilities

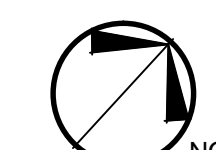
Proposed Facilities have a 25 foot setback  
from Full Summer Time Pool



## MASTER PLAN FOR HART STATE PARK HARTWELL, GEORGIA

AUGUST 12, 2015  
REV: SEPTEMBER 18, 2015

0 50 100 200 300



**Rochester**  
& Associates, Inc.  
425 Oak Street N.W. • Columbus, Georgia 30601  
(770) 718-0000 • (770) 718-9990 Fax • www.rochester-assoc.com